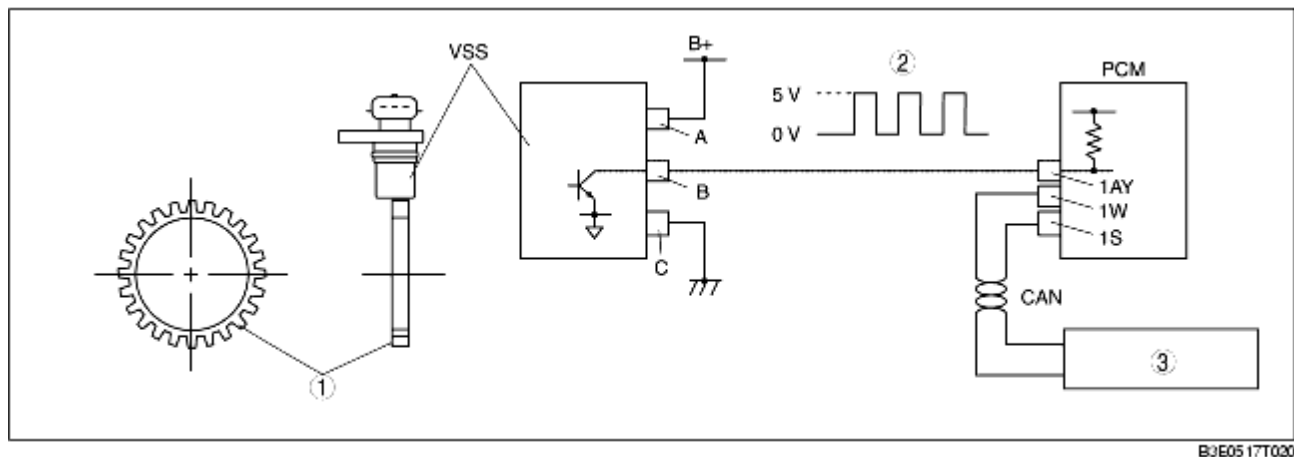


VEHICLE SPEED SENSOR (VSS) CONSTRUCTION/OPERATION

B3E051719010T04

- The VSS is a Hall element type. A 24-pulse signal is generated per rotation of the sensor rotor and the VSS sends this signal to the PCM.
- The PCM performs EC-AT control based on the VSS and throttle position sensor signals.
- The PCM also outputs the vehicle speed signal to the instrument cluster.



1	Sensor rotor
2	Input pulse
3	Instrument cluster